



V-CONTINENT

Beijing Parkview Wuzhou Hotel

北京北辰五洲皇冠国际酒店

V-Continent Beijing Parkview Wuzhou Hotel

- ABOUT V-CONTINENT BEIJING PARKVIEW WUZHOU



V-Continent Beijing Parkview Wuzhou Hotel is the flagship hotel of Beijing North Star V-Continent Hotel Management Company. A deluxe hotel conveniently located in core area of Asian Olympic business district of the north Fourth Ring Road Beijing, adjacent to Beijing International Convention Center, China National Convention Center, and within walking distance to the city's Olympic Green and much celebrated Bird's Nest Stadium. The hotel is just 25-minutes from Beijing Capital International Airport. It's pretty convenient to go Tiananmen Square, Forbidden City, the Summer Palace, Silk Street and other high streets and scenic spots, an ideal place for business and leisure travelers.

- LOCATION



- Adjacent to the Beijing International Convention Centre and China National Convention Centre (BICC & CNCC).
- Boast with great views, surrounded by the green lawns, within walking distance to Bird's Nest Stadium, Water Cube, China Science and Technology Museum and City's Olympic Green.
- Only a short 10-minutes drive from both Shangdi Hi-tech Zone and Zhongguancun Hi-tech Area and CBD WangJing.
- Just 25-minutes from Beijing Capital International Airport, Tiananmen Square and Forbidden City .

- ACCOMMODATION



- V-Continent Beijing Parkview Wuzhou Hotel boasts 459 well - designed guest rooms and suites of differing types.
- Interactive television, high-speed broad band and wireless Internet access.
- For the business traveller, the hotel's V - Club which is located on the 15th to 17th floor offers tailor-made services in meeting executive style needs.

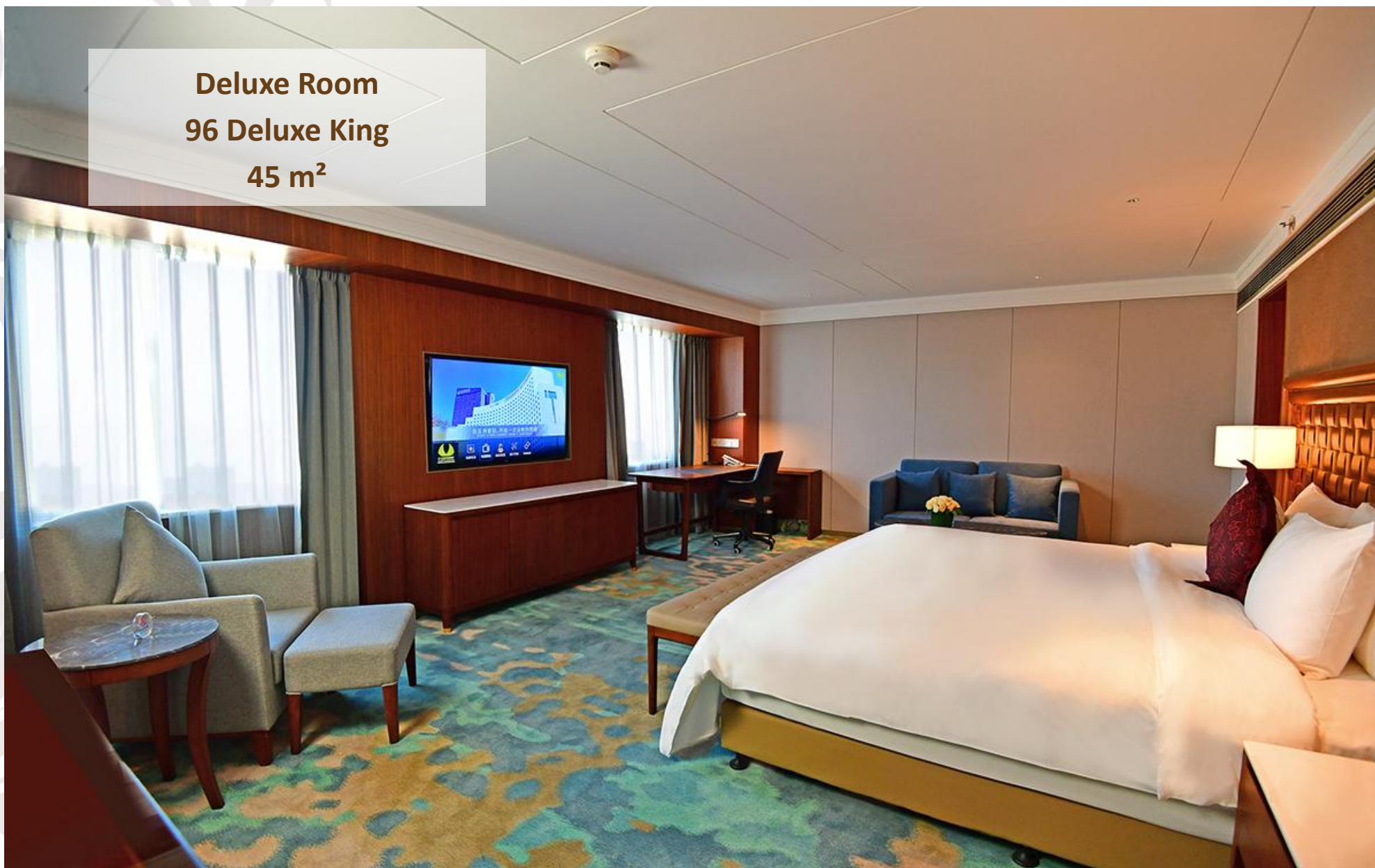
- ACCOMMODATION

Superior Room
Total 257 room
134 Superior Twin
119 Superior King
4 Disable Room
35 m²



- ACCOMMODATION

Deluxe Room
96 Deluxe King
45 m²



- ACCOMMODATION

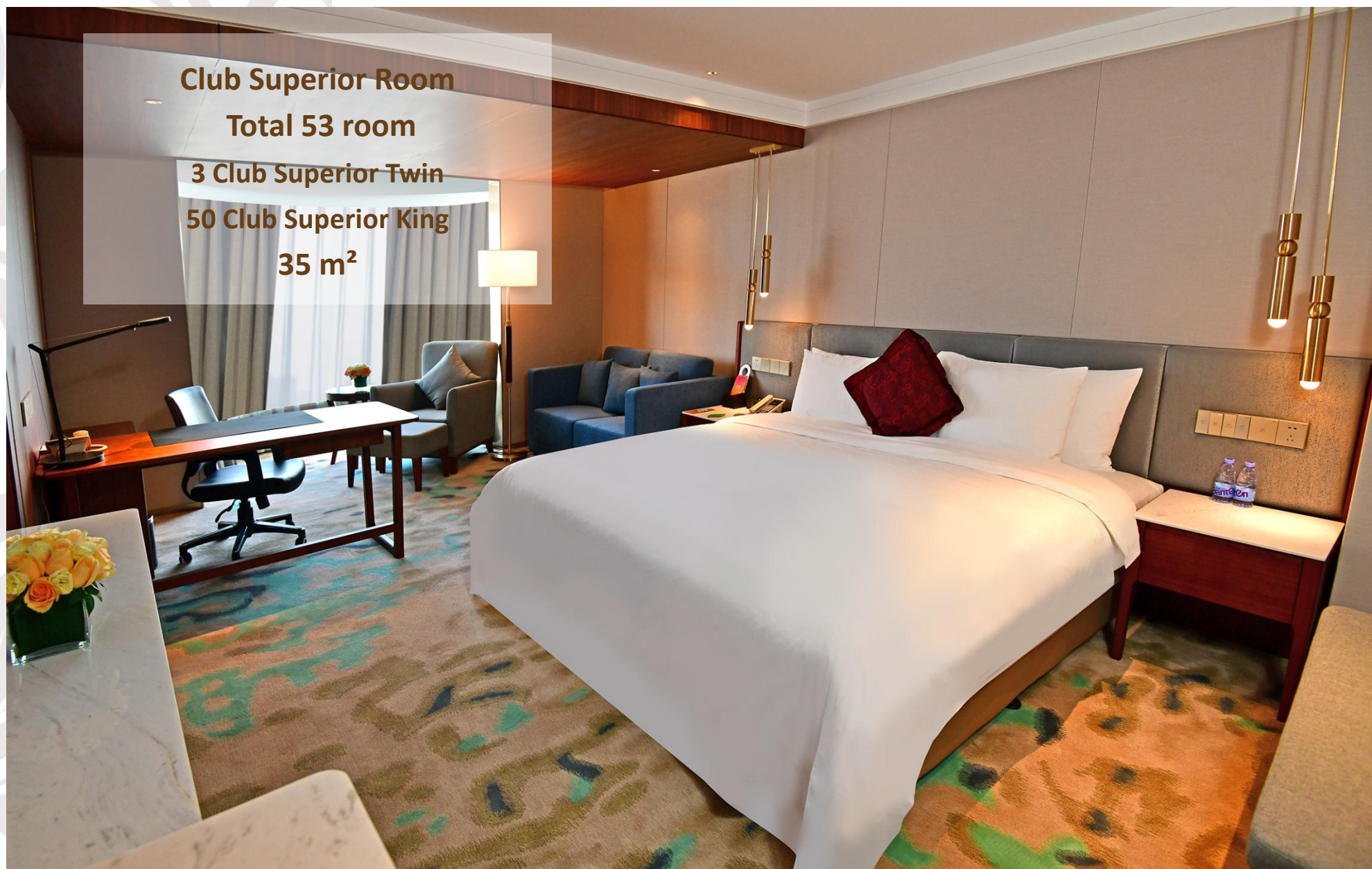
Club Superior Room

Total 53 room

3 Club Superior Twin

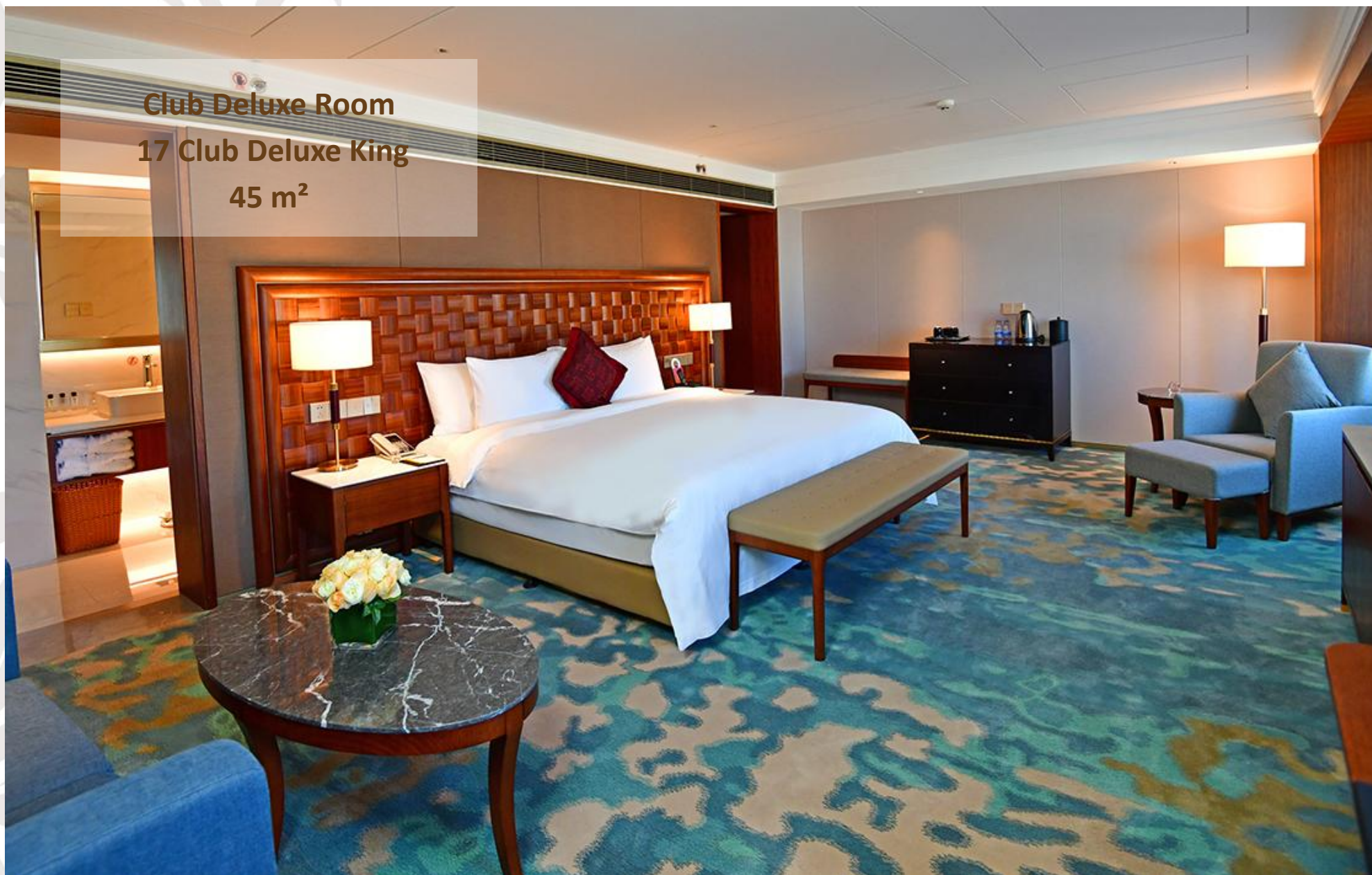
50 Club Superior King

35 m²



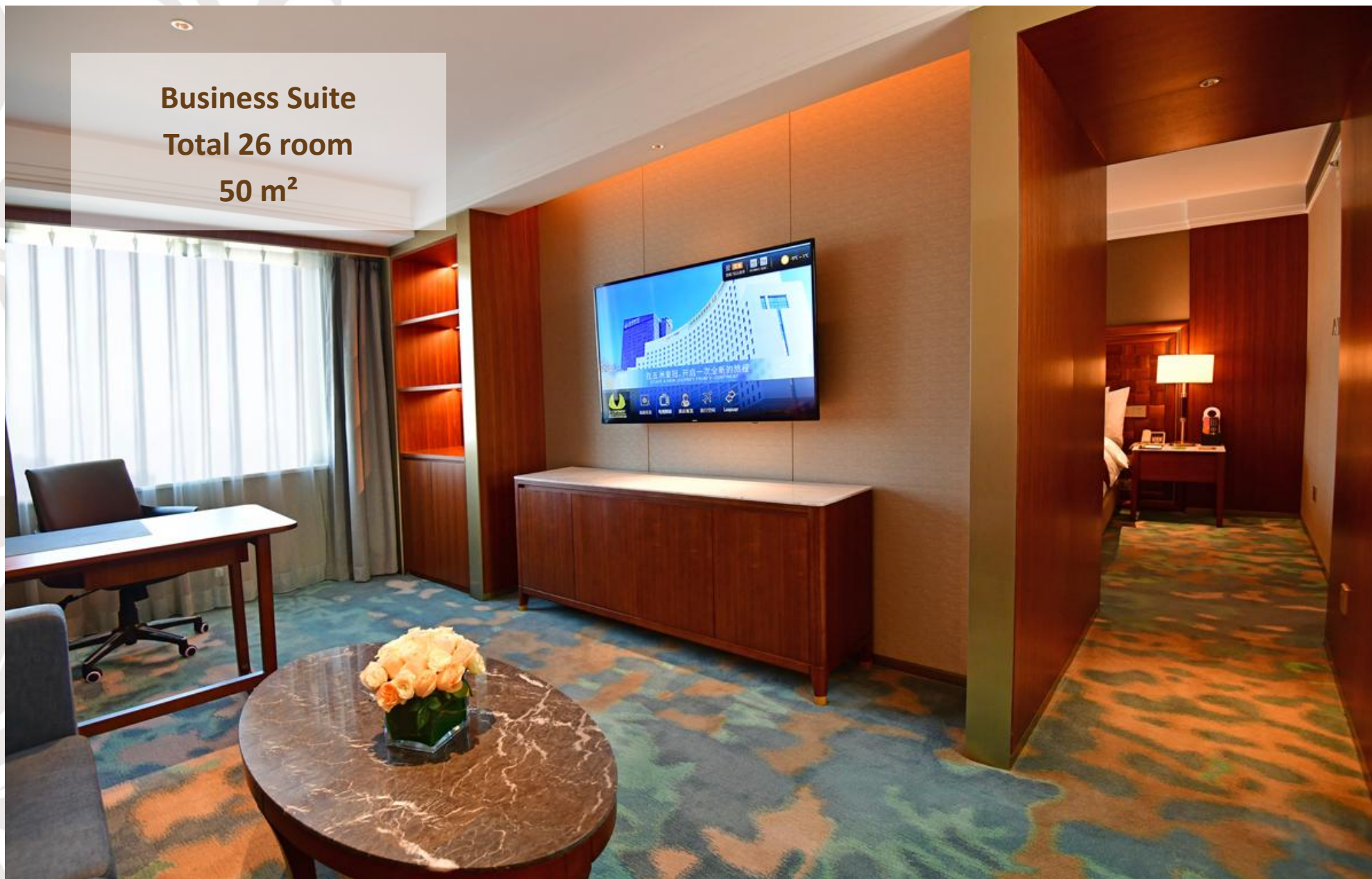
- ACCOMMODATION

Club Deluxe Room
17 Club Deluxe King
45 m²



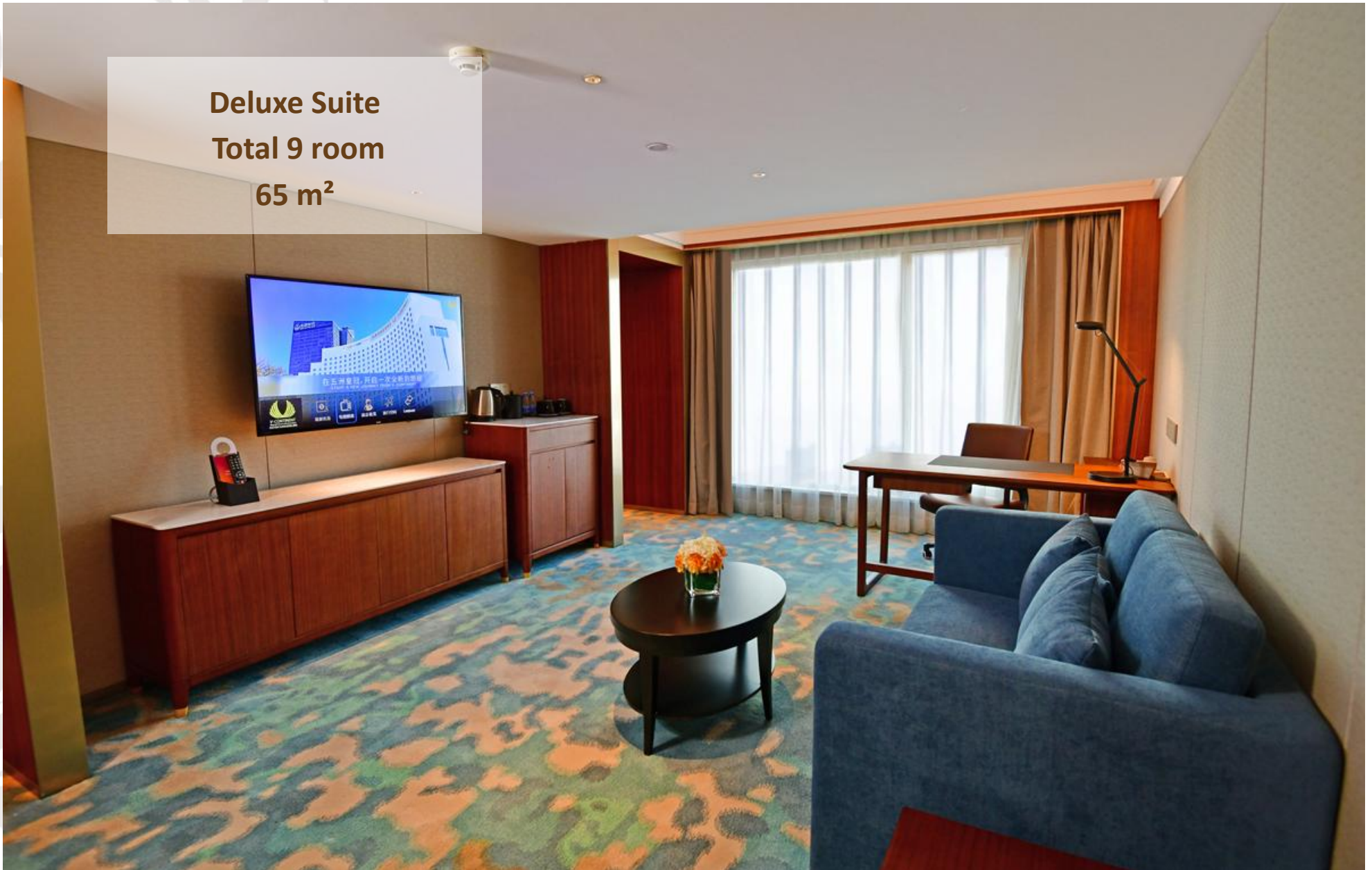
- ACCOMMODATION

Business Suite
Total 26 room
50 m²



- ACCOMMODATION

Deluxe Suite
Total 9 room
65 m²



- ACCOMMODATION

Executive Suite
Total 1 room
140 m²



- MEETING FACILITIES



- Natural light and pillar-free V-Ballroom, nine multi-function meeting rooms, seating anywhere from 10–1,000 guests in a variety of configurations.
- We offer the latest in audio-visual equipment, high speed broadband, wireless network, on and off-site catering and a fully professional meetings support team.

- MEETING FACILITIES

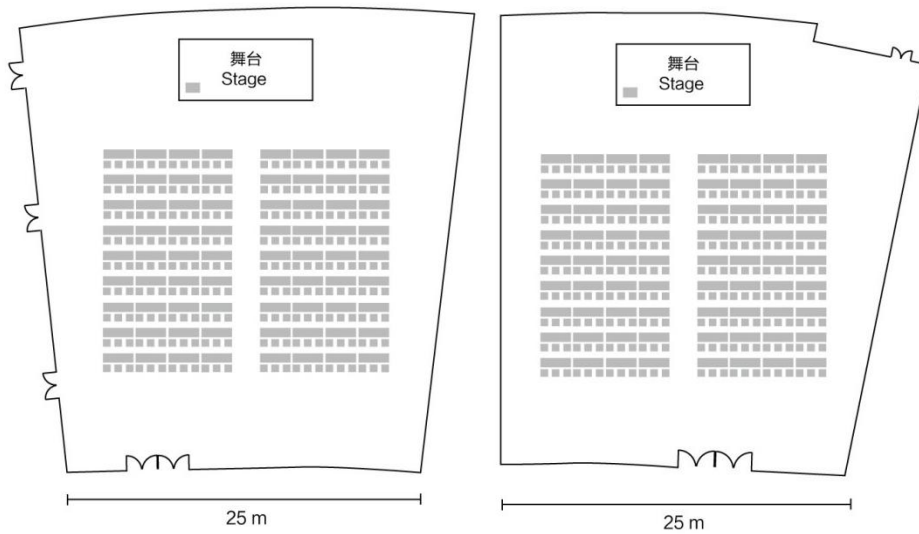
V Ballroom 1120 m²

皇冠宴会厅 A Ballroom A

面积 / Area: 560 m²

皇冠宴会厅 B Ballroom B

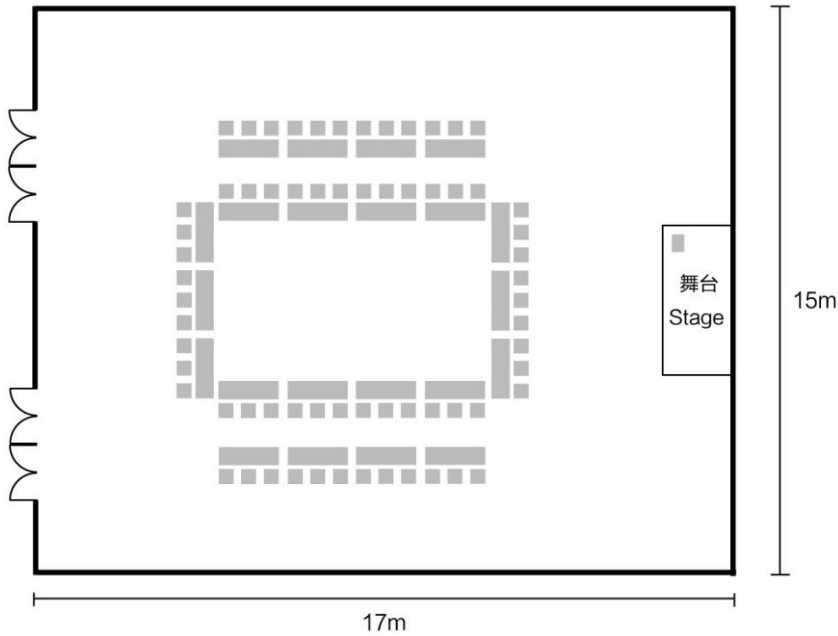
面积 / Area: 560 m²



- MEETING FACILITIES

Meeting Room 255 m²

会议室 Meeting Room 1



- DINING



Café Asia

Extensive international buffet with a touch of Asian mystique Various live action stations from fresh seafood, succulent meats, Cantonese delights, South-East Asia specials to mouth-watering sweets...all those you cannot resist!

Maximum Pax : 260



- DINING



Yue Feng Ge

Classic Cantonese cuisine, fresh seafood, with a hint of Beijing Flavors and high quality beverages. Within a comfortable environment, whether for socializing with friends and family or for important business talks.

Maximum pax :120

Private room :6



- DINING



Brazilian Churrascos

Sit back... relax... and let the Brazilian food come to you. Traditional Brazilian fare served by authentic Brazilian Chef whom has more than 15 kinds of meat on offer. Additions to the meat feast are the fresh salad bar, dessert buffet and grilled seafood.

Maximum Pax :110



- DINING



Jade Hot Pot

Our free standing Hong Kong style hot pot restaurant set within the surroundings of the hotel's attractive park grounds.

Maximum Pax : 130



- DINING



Jade Sun Bake & Brew

Provides homemade pizza, pasta, sandwich, desert and fresh brew beer. A good place for friends gathering and small wedding.

Maximum pax :
44 (indoor)
72 (outdoor)



- DINING



Palm Garden Lobby Lounge

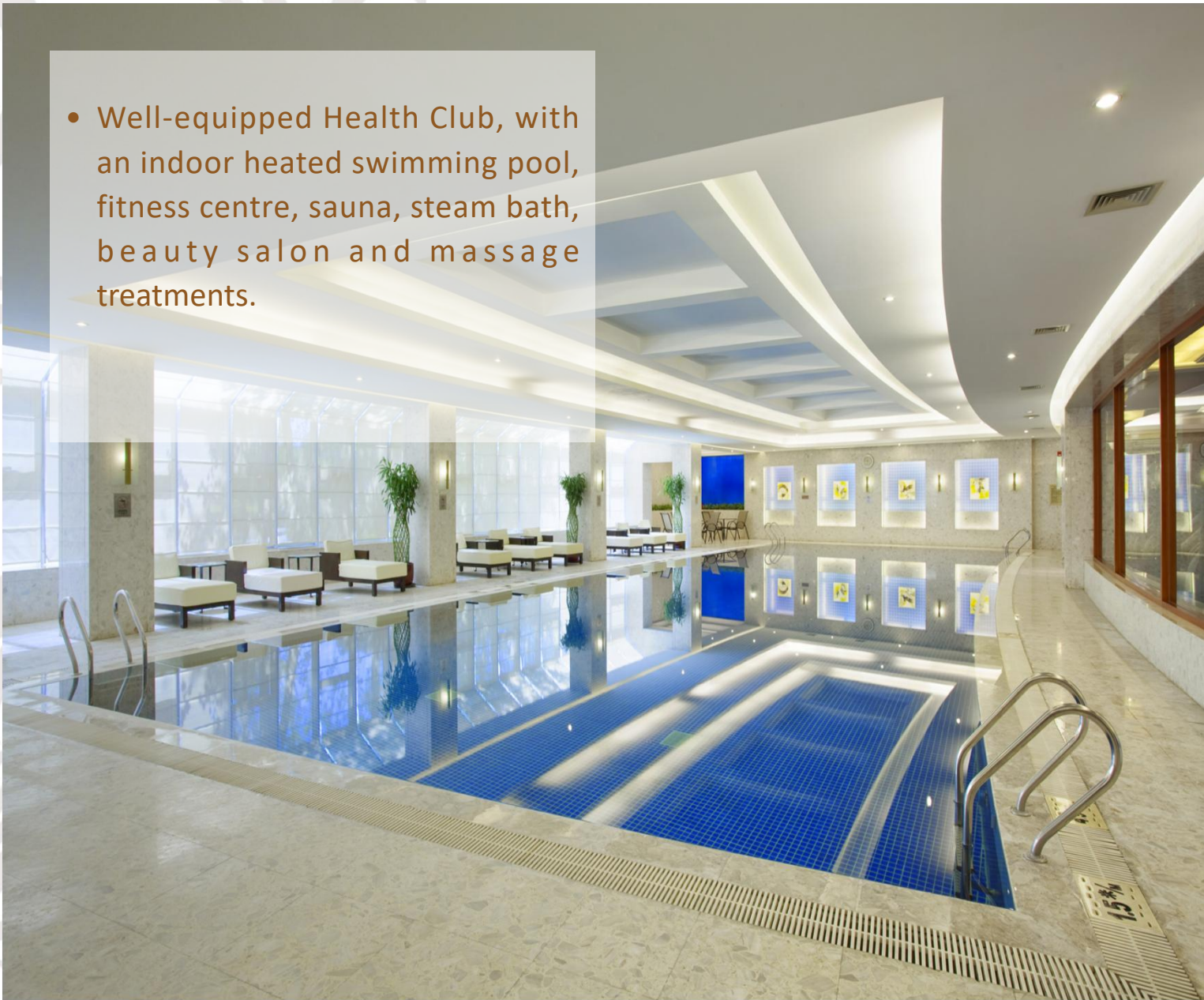
Overlooks the hotel's Lobby and Gardens. Enjoy warm sunlight by day and the night sky in the evening as you enjoy a wide-range of refreshing drinks and great tasting snacks.

Maximum pax :155



- SERVICE AND FACILITIES

- Well-equipped Health Club, with an indoor heated swimming pool, fitness centre, sauna, steam bath, beauty salon and massage treatments.



Thank You!

电话 / Tel: (86) 10 8498 2288

传真 / Fax: (86) 10 8497 2887

网址 / web: www.v-continent.com

电子邮件 / Email : reservation@v-continent.com

地址: 中国北京市朝阳区北四环中路8号 邮编: 100101

Add: No. 8 North Si Huan Zhong Road, Chaoyang District, Beijing 100101, P. R. China